



WRAP QUALITY PROTOCOL

Executive summary of the WRAP protocol for: PMW QUARRIES LTD Carr Hill Quarry, No 4, Barnsley Road, Huddersfield HD88XG. Environmental Permit No: EPR/DB3031AT – PMW QUARRIES LTD. Company registration No: 06962567

Management Team:

Depot manager

Recycling site operator

Yard Foreman

PMW QUARRIES LTD

OVERVIEW

This document has been prepared by PMW QUARRIES LTD to briefly outline the operational processes and the associated quality control measures at the site at Carr Hill Quarry near Shepley.

MANAGEMENT RESPONSIBILITIES AND RESOURCE MANAGEMENT

MANAGEMENT RESPONSIBILITIES

The Depot Manager has overall responsibility for the operations at Carr Hill Quarry. He is also responsible for the day-to-day operations and must ensure that the operations are in line with the quality protocol.

The Depot Manager is also responsible for ensuring that the site responsibilities and authorities are clearly defined and communicated.

The operational staff members work under the overall direction of the recycle site operator to implement the procedures of the quality protocol.

RESOURCE MANAGEMENT

The operational staff at Carr Hill Quarry have the appropriate training for tasks they undertake. The Depot Manager continuously assesses the training requirements of new and existing staff and where required, training will be given to ensure the successful execution of site operations.

METHOD STATEMENT OF PRODUCTION

The following materials will be accepted for processing at Carr Hill Quarry in accordance with the European Waste Catalogue (EWC accordance with) classification:

EWC CODE	WASTE DESCRIPTION
17 01	Concrete, bricks, tiles, and ceramics
17 01 01	Concrete
17 01 02	Bricks
17 01 03	Tiles and Ceramics
17 01 07	Mixtures of concrete, bricks, tiles, and ceramics other than those mentioned in 17 01 06
17 02 02	Glass
20 02 02	Soils and stones

PMW QUARRIES LTD

INCOMING MATERIAL ACCEPTANCE CRITERIA

All waste received at the site will be subject to the following acceptance criteria.

RECEPTION

All loads must come from recognised sites / demolition companies and be carried by a registered waste carrier. Vehicles delivering the material will report to the office, where the incoming material will undergo an initial visual inspection prior to having the required documentation checked, recorded, and exchanged.

MATERIAL INSPECTION

Following reception of the material, visual inspection of the load will be conducted by the recycling site operator, or a suitably qualified operative as deemed by the Depot Manager. This inspection is to confirm the accuracy of the load composition as compared to the accepted material criteria and the accompanying documentation. Following the inspection procedure, the incoming load will either be:

- Provisionally accepted, with documentation checked, recorded, and exchanged.
- Rejected and removed off-site.

MATERIAL ACCEPTANCE

All accepted material must have the necessary waste transfer documentation. Each load must be accompanied by; date and time of delivery, vehicle registration, waste description and EWC code, waste origin, waste quantity and ticket number. Upon acceptance onto site the incoming load will be directed to the appropriate area for deposition. The deposited load will be spread and subjected to further compliance inspection. If non-compliance material is discovered amongst a load of waste during deposition the delivery lorry will be reloaded and removed off site. Compliant materials will then be added to the pre-processed stockpile.

Rejection of Material

- Materials brought to site without the correct documentation will be rejected and removed off-site.
- Any loads that do not conform to the accepted material criteria at the site will not be permitted to proceed beyond the waste reception area.
- Rejected material will be recorded and discussions with the producer of the material will be instigated to eliminate the risk of receiving non-compliance material from them. The Environment Agency will be contacted and provided with the following details about the non-compliant material.
 - Type of Waste
 - Carriers Registration Number
 - Name of Carrier
 - Date of Delivery
 - Name of Producer

PMW QUARRIES LTD

PROCESSING PROCEDURE

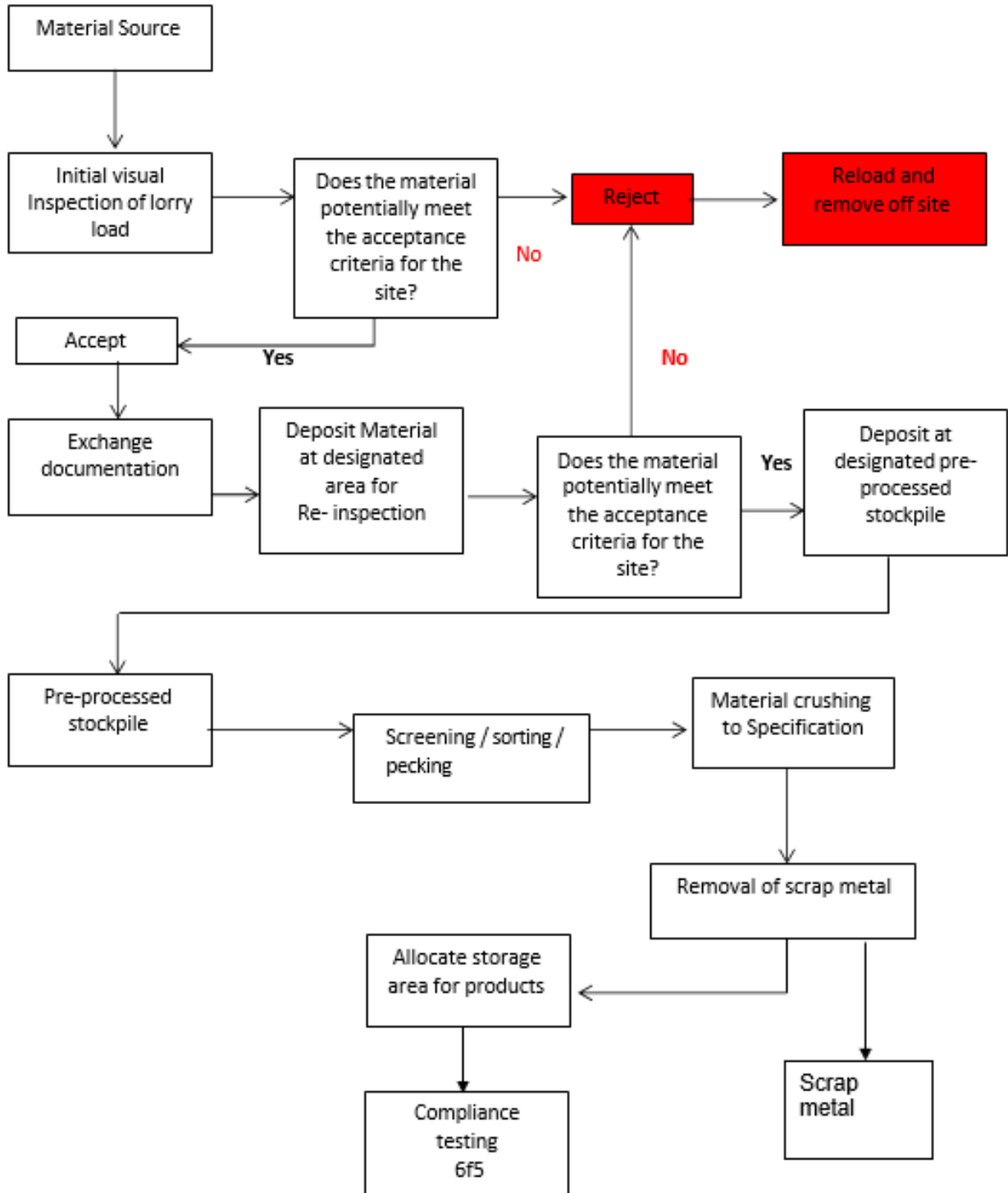
The production process will only involve materials that have undergone the acceptance procedure. No non-compliant material will be stored at the site or progressed through the production process. The production process can commence when the acceptance criteria for the site has been met.

The production process consists of a 360-degree excavator fitted with a crusher bucket attachment collecting the material and crushing it into a stockpile conveyor. The conveyor is fitted with a magnet belt to remove all the steel. A hydraulic hammer is used to reduce the size of the material prior to it being crushed. The crushed material will then be stockpiled in the designated processed areas. No crushed materials are to be stockpiled outside of this area, to safeguard against cross contamination. The product (6F5) is then collected or delivered with proof of delivery or collection

The removed scrap steel will be collected and disposed of through our local scar dealer.

PMW QUARRIES LTD

Flowchart for the processing of construction and demolition waste.



PMW QUARRIES LTD

FINISHED PRODUCT - 6F5

PMW QUARRIES carries out a regular testing regime in line with WRAP aggregates quality protocol. This is independently carried out by Rogers Geotechnical Services, located at Barncliffe Business Park, Shelley, Huddersfield, HD8 8LU.